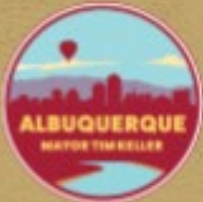
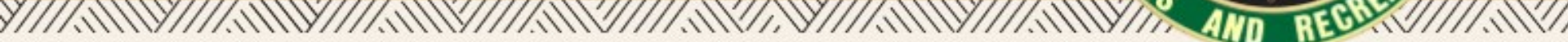


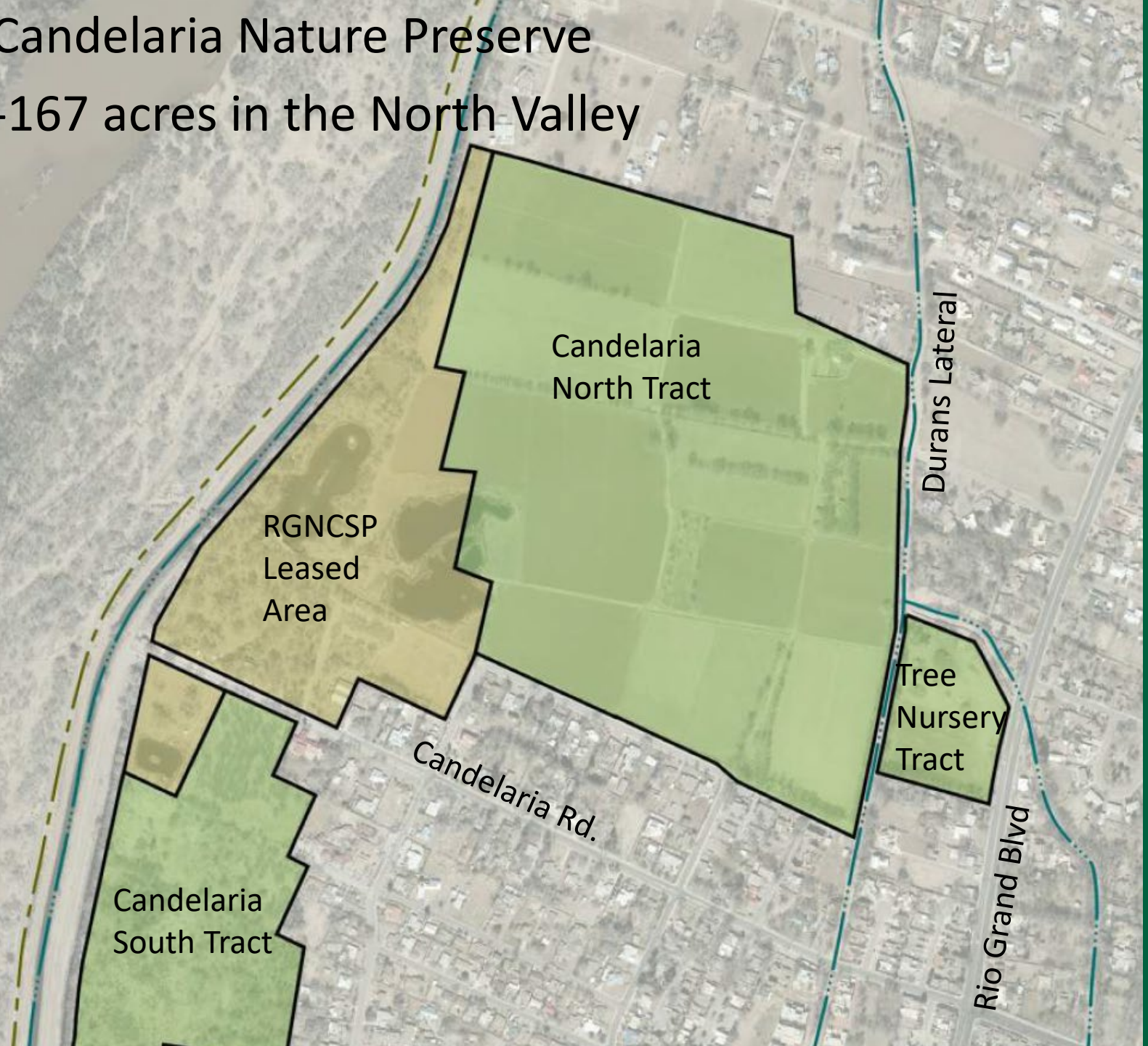
# Candelaria Nature Preserve Resource Management Plan



**ONE  
ALBUQUE  
RQUE** parks &  
recreation

# Candelaria Nature Preserve

-167 acres in the North Valley



Candelaria  
North Tract

RGNCSP  
Leased  
Area

Candelaria  
South Tract

Tree  
Nursery  
Tract

Candelaria Rd.

Durans Lateral

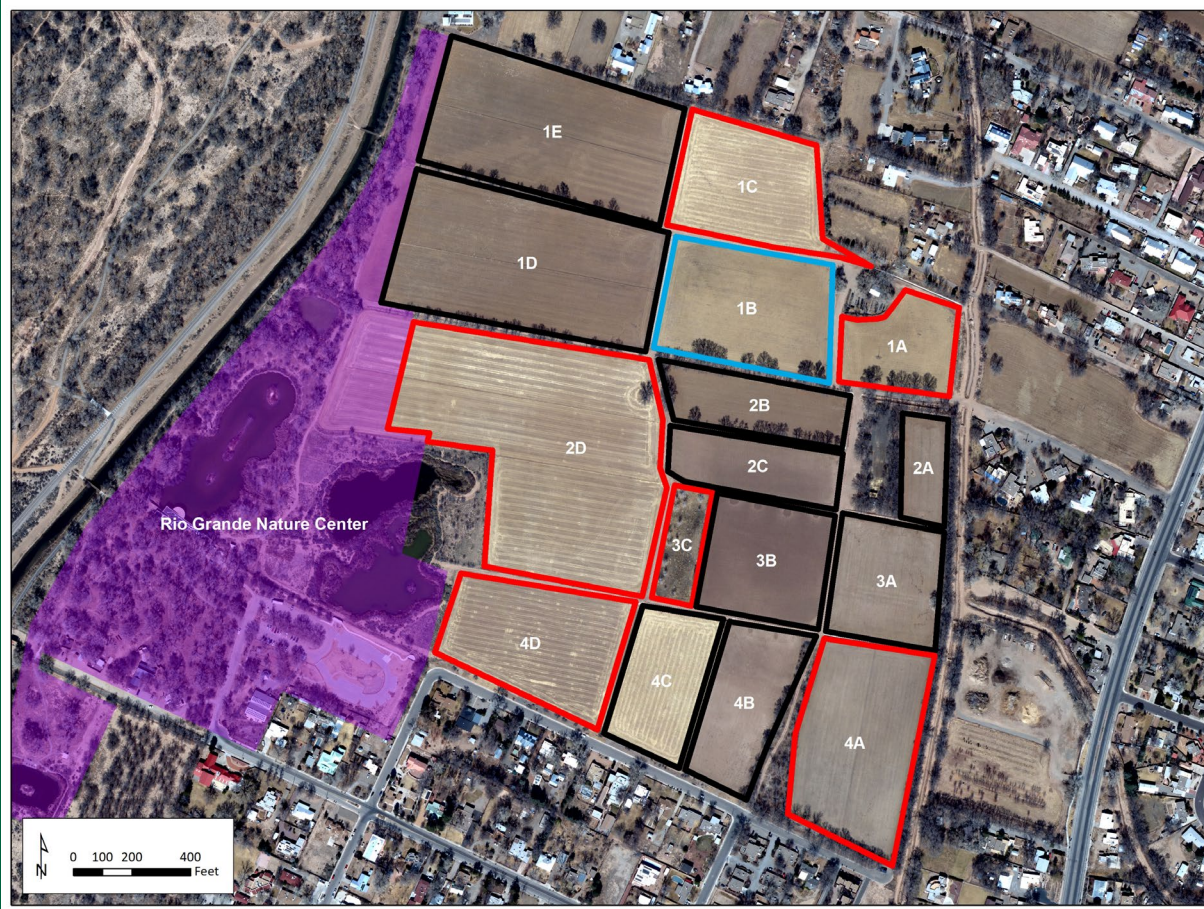
Rio Grand Blvd

# 2020 Accomplishments

- Farming
  - JT Farms
  - Aquatic Consultants
- Wetlands
- Monitoring
- Habitat Council
- Integrated Pest Management Plan



# CNT: Farming Activities



Approximate acreage per field Wildlife cropping and habitat areas appear in red (see detailed crop plan attached)

- 1A: 2.85 acres
- 1B: 5.51 acres
- 1C: 4.9 acres
- 1D: 9.13 acres
- 1E: 8.17 acres
- 2A: 1.45 acres
- 2B: 2.7 acres
- 2C: 2.7 acres
- 2D: 13.26 acres
- 3A: 3.73 acres
- 3B: 3.91 acres
- 3C: 1.43 acres
- 4A: 6.26 acres
- 4B: 3.87 acres
- 4C: 3.27 acres
- 4D: 5.3 acres

**Total farmable acreage: 78.18**  
**Designated wildlife cropping and habitat areas: 39.51**(approximately 50.5% of total farmable acreage)

# Wetland Conceptual Design



# CNT: Monitoring and Restoration

## Quadrant Survey

On October 30, 2020 and November 2nd, 2020 vegetation surveys were undertaken. Utilizing previous aerial maps, knowledge of farming history, and soil surveys done by the US Department of Agriculture, and Natural Resources Conservation Service in 2019, 13 sites were selected. A 1m<sup>2</sup> quadrat was placed within the middle of these sites to determine species cover percentage and dominant plant species. A visual inspection was done of each of the sites to identify any additional plant species.

## Soil Seed Bank

Fifteen small (40g) soil samples were taken in a random distribution at each of the 13 sites. The 15 samples were then mixed together, and the process was repeated at each of the sites. The samples were sent to a soil seed bank analysis lab at Oregon State University.

## Photo Points

Eleven photos points throughout the CNT looking over each farm field plot. Monitoring happening on an annual basis in the summer.

## Work at Candelaria

November 9<sup>th</sup> – 13<sup>th</sup> and December 2 - 5<sup>th</sup> 4 Ancestral Lands crew members mechanically cleared invasive weeds from the drains and planted 50 native shrubs (willow, wolfberry, golden current) along the drains

# Habitat Council

Support for Valle de Oro National Wildlife Refuge, Whitfield Conservation Area and Candelaria Nature Preserve. Will provide technical, expert advise on weed management, monitoring, public outreach, habitat plans, wildlife crops, Integrated Pest Management plan, climate change factors, and research projects

Group includes the following:

- Ciudad Soil and Water Conservation District
- Valencia Soil and Water Conservation District
- US Fish and Wildlife Service
- New Mexico State University
- Natural Resources Conservation Service
- CABQ BioPark, Heritage Garden
- Rio Grande Return
- Habitat Farm Collective
- Audubon New Mexico



# IPM Planning



The Integrated Pest Management plan will include the following:

- Comprehensive approach to protect desired species from non-native invasive species thru prevention and treatment.
- Site inventory and monitoring schedule
- Framework to prioritize thresholds
- Guidelines on staff training on prevention, detection, and appropriate techniques
- Control techniques that are appropriate and accountable to thresholds
- Guidelines for collaboration and with public and stakeholders to increase public awareness and understanding of invasive species and IPM approaches
- Protocols for informing public, especially neighboring residents, about all methods used to manage weeds, including the use of herbicide
- Revegetation with native species
- Monitor protocols of control techniques
- Measurable objectives so results are held accountable
- Framework that is adaptable as new information, tools, threats, and climate changes over time.
- Mitigation protocols for non-target impacts from control methods such as those on soil, water, wildlife, cultural, and human impacts.
- Prevention practices for further spread and reinvasion.



# 2021 Activities

- Contract
  - Aquatic Consultants & Ciudad Soil and Water Conservation District
- Monitoring & Education
  - Bosque Ecosystem Monitoring Program and Rapid Assessments, Citizen Science Monitoring, Monthly Tours
- Habitat Council
  - Quarterly Meetings and Site Visits
- Friends Group
  - MOA
- Planning efforts
  - Wildlife Viewing Areas
  - Tree Nursery Tract



# Planning: Wildlife Viewing Areas

## Week of March 8<sup>th</sup>, 2021

Conduct an on-line public meeting to present the concept plans

## Week of March 29<sup>th</sup>, 2021

Compile public comments & prepare schematic design plans

## Week of April 5<sup>th</sup>, 2021

Present the final schematic designs to the public

## May 12<sup>th</sup>, 2021

Preparation of construction documents Complete



# RMP Approval Process

## Candelaria Nature Preserve Budget

| Revenue Type                                | Year | Amount           | Expenditures     | Vendor                                      | Purpose   |
|---|------|------------------|------------------|---|---|
| <u>Capital Funds</u>                        |      |                  |                  |   |   |
| State Capital Outlay Grants                 | 2019 | 300,000          |                  |   |   |
|   |      |                  | \$228,492.20     | Aquatic Consultants Contract                | Habitat restoration and planning  |
|   |      |                  | \$71,507.80      | Franklins Earth Movers                      | Wildlife Blind Construction   |
| State Capital Outlay Grants                 | 2019 | 110,000          |                  |   |   |
|   |      |                  | \$110,000        | MRWM/Franklins                              | Planning: Tree Nursery Tract, Wildlife Blinds and Viewing Platform  |
| State Capital Outlay Grants                 | 2021 | \$275,000        |                  |   | Heavy equipment, fencing materials, and complete wetland design   |
| <b>Total Capital Funds</b>                  |      | <b>\$685,000</b> | <b>\$410,000</b> |   |   |
| <u>O &amp; M Funds</u>                      |      |                  |                  |   |   |
| General Fund                                | FY21 | 108,000          |                  |   | \$68,000 for Biologist Position plus \$40,000 for farming contract, and management including monitoring and soil amendments |
|   |      |                  | \$74,000         | Ciudad Soil and Water Conservation District |   |
| <b>Total Operation and Management Funds</b> |      | <b>\$108,000</b> | <b>\$74,000</b>  |   |   |

# RMP Approval Process

- Environmental Planning Commission

EPC recommended the RMP be approved by City Council in January 2021 meeting

- City Council

The RMP will be reviewed by City Council next

- National Park Service

The RMP will be reviewed by the NPS for LWCF compliance



<https://www.cabq.gov/candelaria-nature-preserve>